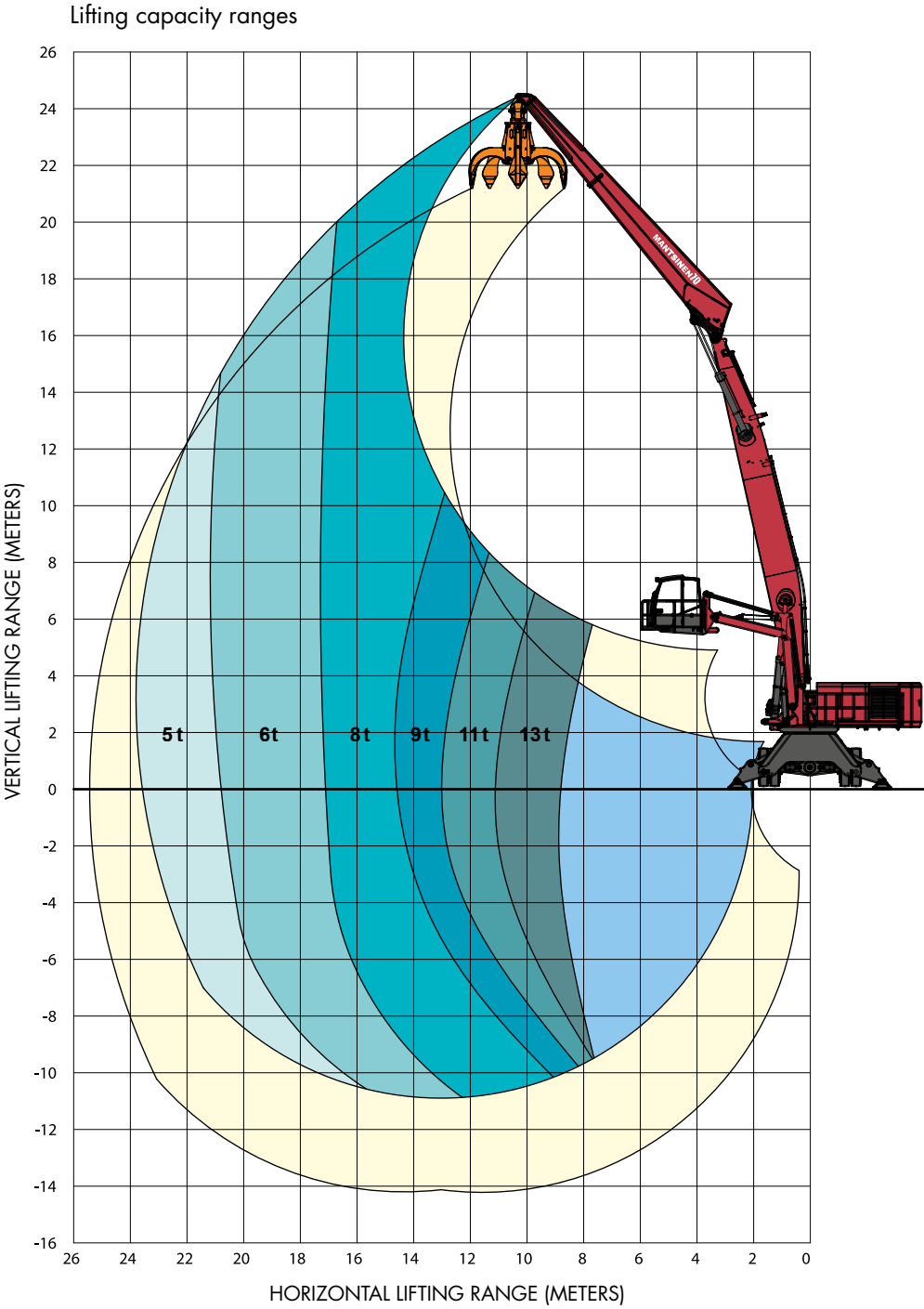
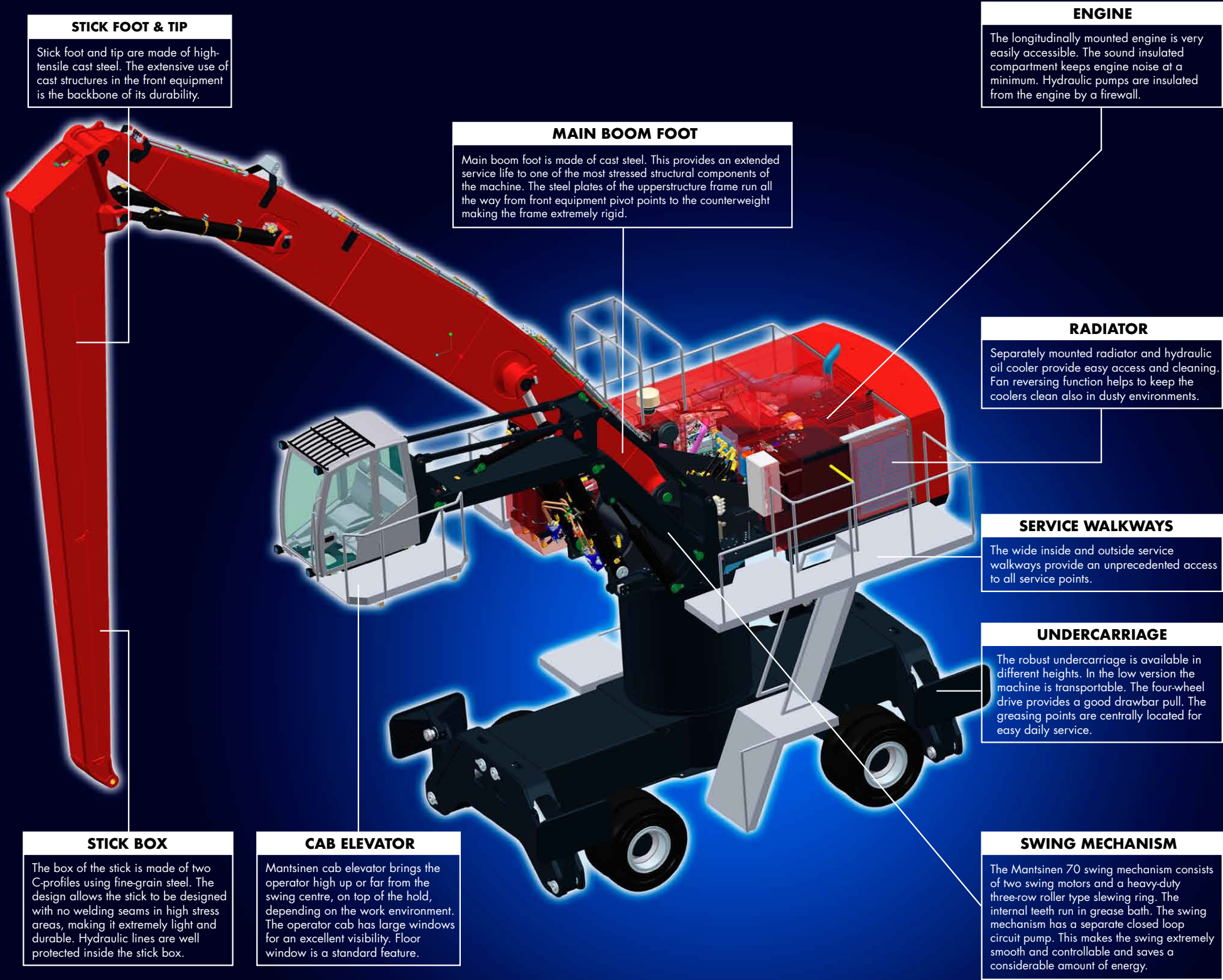


MANTSINEN 70 M



MANTSINEN 70 M

Lift your efficiency to the next level with hydraulic precision



MANTSINEN 70 M - Technical specifications

| Front equipment | |
|-------------------------------------|--|
| Max. horizontal reach | 24 m |
| Lifting capacity (approx.) | 8,5 t / 16 m |
| Engine | |
| Type | Agco Sisu 84 CTA |
| Power | 262 kW / 1 800 r/min |
| Number of cylinders | 6 |
| Displacement | 8,4 l |
| Hydraulic system | |
| Oil flow, front equipment and drive | 2 x 420 l/min |
| Oil flow, swing | 320 l/min, closed loop circuit |
| Working pressures | Equipment 330 bar, swing 270 bar, drive 330 bar |
| Swing speed | 0 – 6,7 r/min |
| Undercarriage | |
| Heights | 1,9 m / 3 m / 4 m |
| Wheelbase | 3 940 mm |
| Tyres | 8 x 14.00 – 24 solid rubber |
| Service brakes | Drum brakes |
| Parking brake | Automatic wet multi-disc brake at front axle |
| Drive speed | 0-12 km/h |
| Cab elevator N1-3000 | |
| Vertical movement | Max. operator eye level approx. 8 m, with 4 m undercarriage height |
| Cab elevator N2-4000 | |
| Vertical movement | Max. operator eye level approx. 8,5 m, with 4 m undercarriage height |
| Horizontal movement | Max. 7 m from swing centre |
| Weight without work attachment | |
| Depending on configuration | 75 – 82 t |
| Refill capacities | |
| Hydraulic oil reservoir | 800 l |
| Fuel tank | 870 l |

MANTSINEN HybriLift® as option